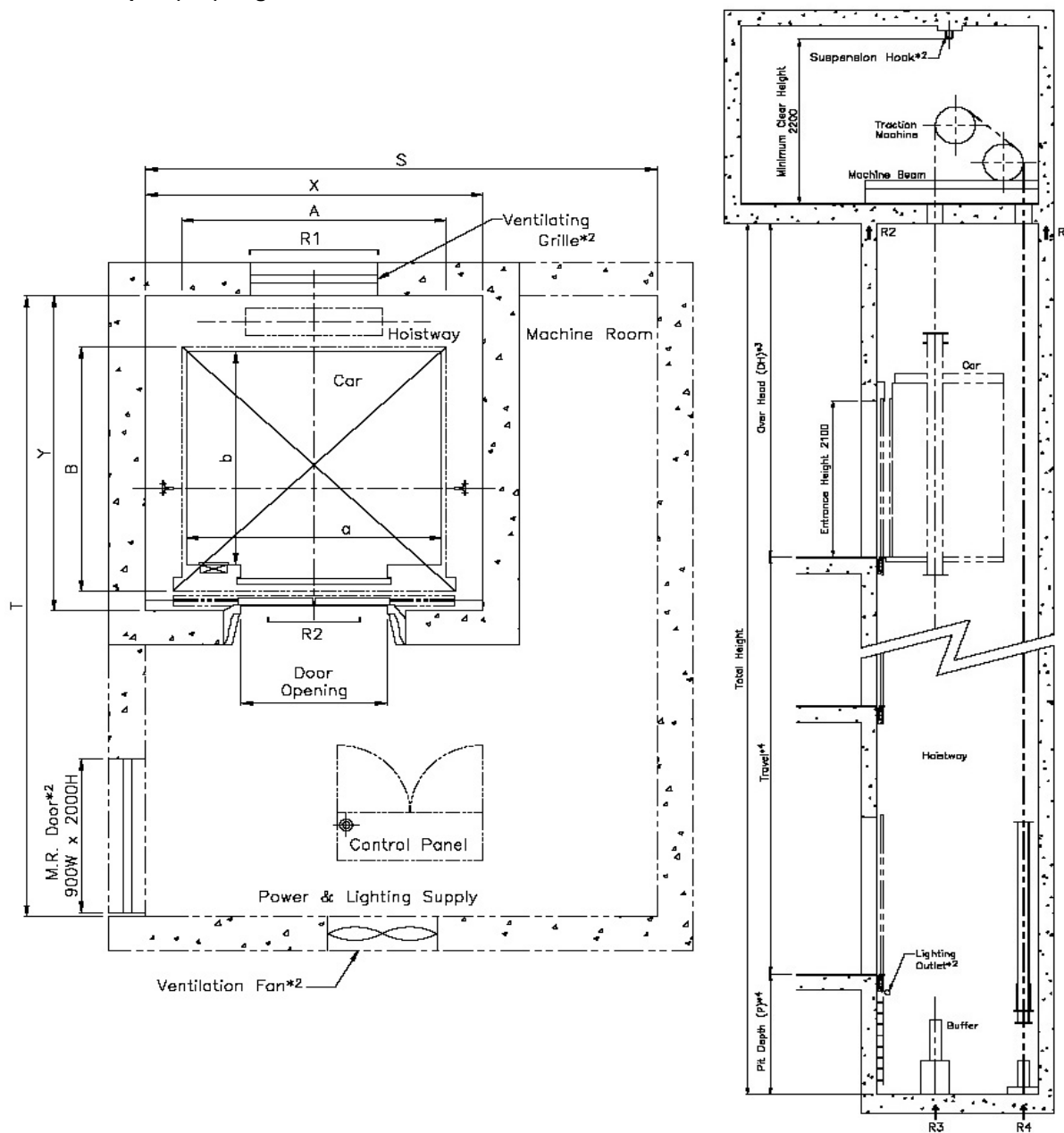


**Dimensions of Hoistway, Machine Room and Reaction Loading for VFI Model  
Based on Japan (JIS) Regulations**



**Suspension Hook**

Speed (m/min)	Load (kg)	Suspension hook capacity
60	450-1,000	3 tons
	1,150-1,600	5 tons
90	550-1,000	3 tons
	1,150-1,600	5 tons
105	550-1,000	3 tons
	1,150-1,600	5 tons
120	750-1,600	5 tons
150	750-1,600	5 tons

- Note:
1. Machine room temperature should be maintained below 40°C with ventilating fan or air conditioner.
  2. Items marked \* shall be furnished by building contractors.
  3. If the ceiling design is EX type, minimum overhead shall be increased by 200 mm.
  4. If the travel is over 80 m and car speed is 120 m/min or 150 m/min, the pit depth shall be 2,500 mm or 2,700 mm, respectively.

**Dimensions of Hoistway, Machine Room and Reaction Loading for VFI Model  
Based on Japan (JIS) Regulations**

No.	Load (kg)	Persons	Speed (m/min)	Model	Door OP width (mm)	Car inside A x B (mm)	Hoistway X x Y (mm)	Machine room S x T (mm)	Overhead (OH)	Pit depth (P)	Machine room reaction load				Motor capacity (kW)
											R1 (kg/EL)	R2 (kg/EL)	R3 (kg/EL)	R4 (kg/EL)	
1	450	6	60	VFI-450-CO60	800	1400 x 850	1750 x 1450	2300 x 3250	4450	1550	3200	2100	5300	4750	4.5
2	550	8	60	VFI-550-CO60	800	1400 x 1030	1750 x 1630	2300 x 3250	4450	1550	3300	2200	6000	5300	5.5
3			90	VFI-550-CO90			1850 x 1680	2400 x 3350	4650	1850	3300	2300	7100	6000	9.5
4			105	VFI-550-CO105			4850	2150	3500	2400	8200	6800	11		
5	600	9	60	VFI-600-CO60	800	1400 x 1100	1750 x 1700	2300 x 3350	4450	1550	3500	2300	6800	5400	5.5
6			90	VFI-600-CO90			1850 x 1750	2400 x 3450	4650	1850	3500	2400	8200	6800	9.5
7			105	VFI-600-CO105			4850	2150	3500	2400	8200	6800	11		
8	700	10	60	VFI-700-CO60	800	1400 x 1250	1750 x 1850	2300 x 3550	4450	1550	3700	2600	7100	5500	7.5
9			90	VFI-700-CO90			1850 x 1900	2400 x 3550	4650	1850	3800	2700	8600	7000	9.5
10			105	VFI-700-CO105			4850	2150	3800	2700	8600	7000	11		
11	750	11	60	VFI-750-CO60	800	1400 x 1350	1750 x 1950	2300 x 3650	4450	1550	4100	2600	7300	5700	7.5
12			90	VFI-750-CO90			1850 x 2000	2400 x 3650	4650	1850	4100	2700	9150	7400	9.5
13			105	VFI-750-CO105			4850	2150	4100	2700	9150	7400	11		
14			120	VFI-750-CO120			5250	2150	8200	5400	12500	10600	13		
15			150	VFI-750-CO150			5450	2450	8200	5400	12500	10600	15		
16	900	13	60	VFI-900-CO60	900	1600 x 1350	2000 x 2000	2600 x 3650	4450	1550	4500	3500	8900	6750	9.5
17			90	VFI-900-CO90			2100 x 2050	2700 x 3750	4650	1850	4500	3500	10200	8150	13
18			105	VFI-900-CO105			4850	2150	4500	3500	10200	8150	15		
19			120	VFI-900-CO120			5250	2150	8400	5500	13400	11200	15		
20			150	VFI-900-CO150			5450	2450	8400	5500	13400	11200	18		
21	1000	15	60	VFI-1000-CO60	900	1600 x 1500	2000 x 2150	2600 x 3850	4450	1550	4600	3750	9200	6950	9.5
22			90	VFI-1000-CO90			2100 x 2200	2700 x 3900	4650	1850	4600	3750	10800	8500	13
23			105	VFI-1000-CO105			4850	2150	4600	3750	10800	8500	15		
24			120	VFI-1000-CO120			5250	2150	8600	5800	14200	11700	15		
25			150	VFI-1000-CO150			5450	2450	8600	5800	14200	11700	18		
26	1150	17	60	VFI-1150-CO60	900	1600 x 1600	2000 x 2300	2600 x 3950	4850	1550	9000	5600	10800	8700	11
27			90	VFI-1150-CO90			2100 x 2350	2700 x 4100	5050	1850	9100	5900	13500	10700	13
28			105	VFI-1150-CO105			5250	2150	9100	5900	13500	10700	15		
29			120	VFI-1150-CO120			5250	2150	9600	6400	15200	12300	18		
30			150	VFI-1150-CO150			5450	2450	9600	6400	15200	12300	20		
31	1350	20	60	VFI-1350-CO60	1100	2000 x 1500	2520 x 2160	3220 x 3910	4850	1550	9800	5900	12000	9400	15
32			90	VFI-1350-CO90			2520 x 2210	3220 x 4000	5050	1850	9900	6200	1500	11700	15
33			105	VFI-1350-CO105			5250	2150	9900	6200	1500	11700	18		
34			120	VFI-1350-CO120			5250	2150	10500	6600	16700	13300	20		
35			150	VFI-1350-CO150			5450	2450	10500	6600	16700	13300	24		
36	1600	23	60	VFI-1600-CO60	1100	2000 x 1750	2520 x 2410	3220 x 4160	4850	1550	10400	6300	13300	10300	15
37			90	VFI-1600-CO90			2520 x 2460	3220 x 4210	5050	1850	10500	6600	16700	12800	18
38			105	VFI-1600-CO105			5250	2150	10500	6600	16700	12800	22		
39			120	VFI-1600-CO120			5250	2150	11100	7000	18400	14400	22		
40			150	VFI-1600-CO150			5450	2450	11100	7000	18400	14400	27		

©Hitachi Elevator Asia Pte Ltd. 2010. All rights reserved.

Hitachi Elevator Asia Pte Ltd.

10 Toh Guan Road East, Hitachi Elevator Building, Singapore 608597 Tel: +65 6416 1711 Fax: +65 65610991 (Main) 0766 (Sales & Engrg)  
Company No.: 197201468W

<http://www.he.a.hitachi.com.sg>